

Configuration

About the Netbiter Config utility

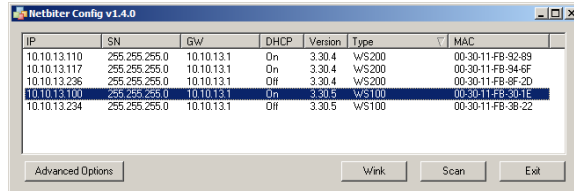
The Netbiter Config utility is a PC-based configuration utility to set TCP/IP network settings in the Netbiter. The utility scans the Ethernet network for connected Netbiter devices and allows the user to set the IP address, net mask, gateway, DNS and hostname for each unit.

Installation Procedure

Download and run the self-extracting installation package **Netbiter Config** from <http://support.netbiter.com>

Scanning for connected devices

First ensure that the Netbiter units to be installed are connected on the same Ethernet network as the PC running Netbiter Config. Use standard Ethernet cables, straight-through or crossover. When the Netbiter Config utility is started it will scan the Ethernet network for Netbiter devices. All detected devices will be presented in a list in the main window. To start a new scan for devices, click the **Scan** button.

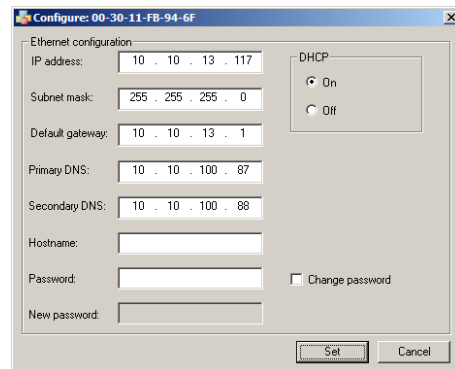


IP	SN	GW	DHCP	Version	Type	MAC
10.10.13.110	255.255.255.0	10.10.13.1	On	3.30.4	WS200	00-30-11-FB-92-89
10.10.13.117	255.255.255.0	10.10.13.1	On	3.30.4	WS200	00-30-11-FB-94-6F
10.10.13.236	255.255.255.0	10.10.13.1	Off	3.30.4	WS200	00-30-11-FB-9F-2D
10.10.13.100	255.255.255.0	10.10.13.1	On	3.30.5	WS100	00-30-11-FB-30-1E
10.10.13.234	255.255.255.0	10.10.13.1	Off	3.30.5	WS100	00-30-11-FB-38-22

Changing IP settings

To change the IP settings for a detected device, double-click the device in the list. This opens a dialog in which the required IP configuration can be made.

The default password for authentication of the new settings is **admin**. Clicking **Set** will cause the Netbiter to reboot, after which the new settings will be enabled.



Ethernet configuration

IP address: 10 . 10 . 13 . 117

Subnet mask: 255 . 255 . 255 . 0

Default gateway: 10 . 10 . 13 . 1

Primary DNS: 10 . 10 . 100 . 87

Secondary DNS: 10 . 10 . 100 . 88

Hostname:

Password:

New password:

DHCP: On Off

Change password

Buttons: Set, Cancel



IMPORTANT! Do not select the DHCP option if there is no DHCP server available on the network.



The new settings can be tested by opening a web browser and entering the IP address as configured above. To discover the device's IP address when using DHCP - start a new scan with the Netbiter Config utility to view the new network configuration information.

Technical Data

Power Supply
9-24 VAC/DC (2 W)

Temperature range
Operating: -40 °C to +65 °C
Storage: -40 °C to +85 °C

Humidity range
5-95% RH, non-condensing

Mounting option
DIN rail (EN 50022)

Dimensions (HxWxD)
57,7mm x 70.0mm x 86,0mm



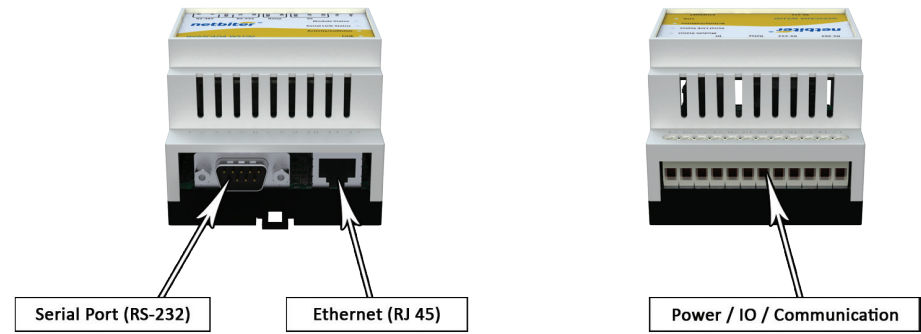
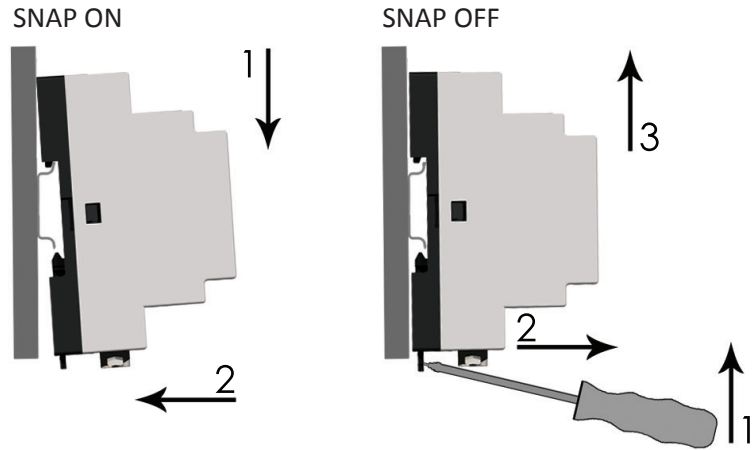
Netbiter® WS100 Installation Guide



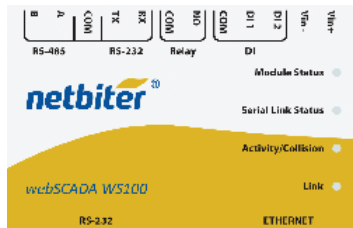
HMS Industrial Networks AB
Box 4126
300 04 Halmstad
Sweden

Phone +46 (0)35 - 17 29 00
Fax +46 (0)35 - 17 29 09
E-mail info@hms.se
Web www.hms.se

DIN Rail Mounting



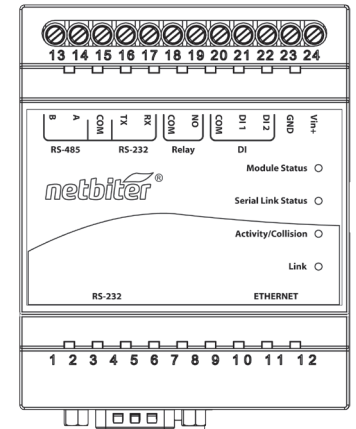
LED Descriptions



Name	Color	Function
Module Status	OFF	No power
	Green	Steady – Module is running in normal mode
	Red	Steady – Hardware fault Flashing red 1 Hz – Error during initialization
Serial Link Status	Green	Flashing – Serial Packet receive
	Red	Flashing – Serial Packet transmit
Activity / Collision	Green	Flashing – Packet receive
	Red	Flashing – Ethernet Collision
Link	Green	Steady – Ethernet network detected, 10Mbps
	Orange	Steady – Ethernet network detected, 100Mbps

Power / IO / Communication

Pin	Description
B	RS-485 Line B
A	RS-485 Line A
COM	Common
TX	RS-232 Transmit
RX	RS-232 Receive
COM	Not in use
NO	Not in use
COM	Digital Input Common
DI1	Digital Input 1+ (10-24VDC)
DI2	Digital Input 2+ (10-24VDC)
Vin-	OV / GND
Vin+	9-24 VAC/DC



Field wiring terminals shall be connected with minimum wire size 24 AWG.

Serial Port 0

Pin	Description
1	CD (Carrier Detect)
2	Rx (Receive)
3	Tx (Transmit)
4	DTR (Data Terminal Ready)
5	GND
6	DSR
7	RTS (Request To Send)
8	CTS (Clear To Send)
9	RI (Ring Indicator)

